



# LAST DOG STANDING

**2 - 4 PLAYERS**

**10 - 15 MINUTES**

**RULES**

# CARDS IN THE DECK

- **CONTROL** × 4
- **QUARANTINE** × 2
- **MASK** × 7
- **VIRUS** × 7
- **SANITIZER** × 3
- **BRIBE** × 3
- **WACKO** × 4
- **BLACK MARKET** × 3
- **SHUFFLE** × 4
- **COUGH** × 5
- **TRICKSTER** × 5
- **BAT** × 2
- **TOILET PAPER** × 6

## GOAL

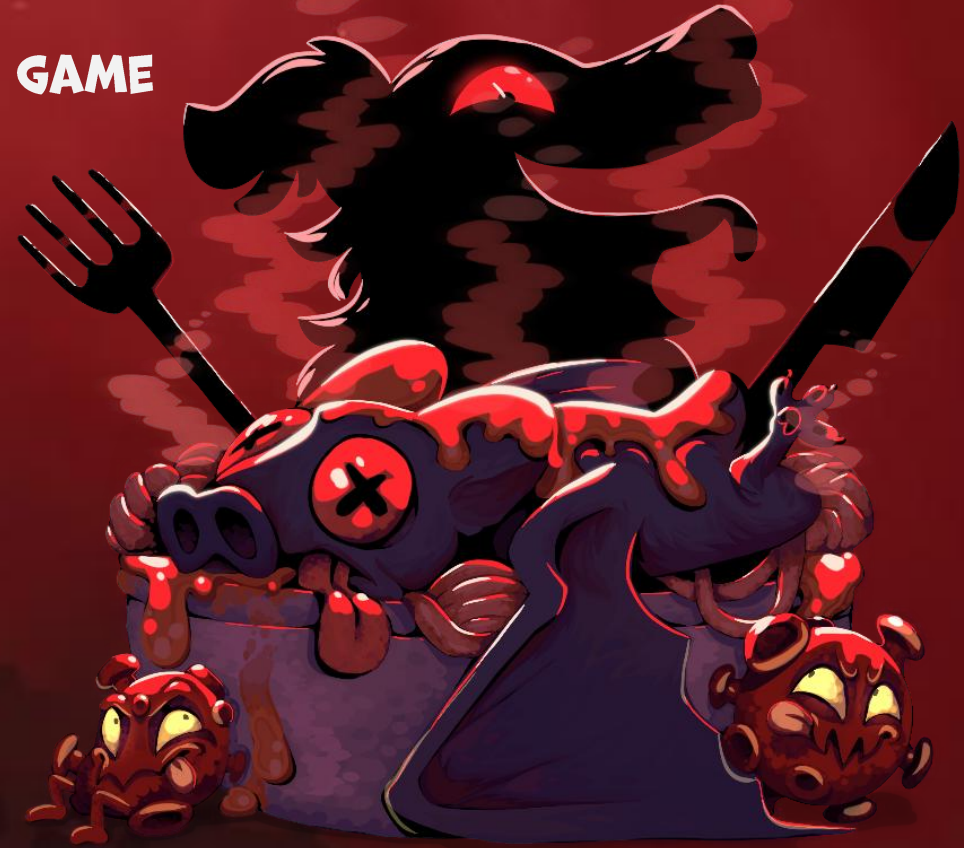
BE THE LAST PLAYER REMAINING IN THE GAME

## OVERVIEW

AVOID DRAWING VIRUS CARDS

DRAW ONE?

KEEP IT HIDDEN AND  
TRY TO GET RID OF IT



... OR TRY TO INFECT OTHER PLAYERS

## WIN

**THE LAST PLAYER WITHOUT 2  
REVEALED VIRUS CARDS WINS**

## LOSE

**A PLAYER WITH 2 OR MORE  
REVEALED VIRUS CARDS IS OUT**

**A VIRUS IS REVEALED IF:**

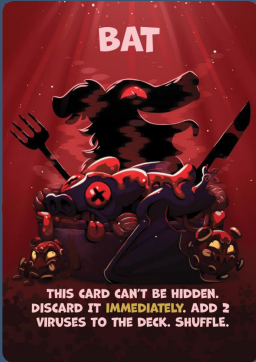
- A PLAYER IS FORCED TO REVEAL IT
- A PLAYER CHOOSES TO REVEAL IT



**PLACE REVEALED VIRUS CARDS  
FACE UP IN FRONT OF YOU**

# INTENSITY ADJUSTMENTS

## 2 PLAYERS



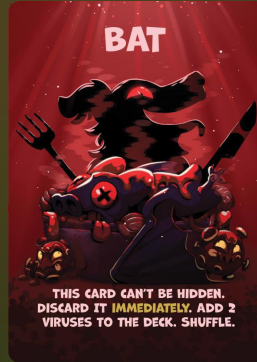
THIS CARD CAN'T BE HIDDEN.  
DISCARD IT IMMEDIATELY. ADD 2  
VIRUSES TO THE DECK. SHUFFLE.

0 IN DECK



7 IN DECK

## 3 PLAYERS



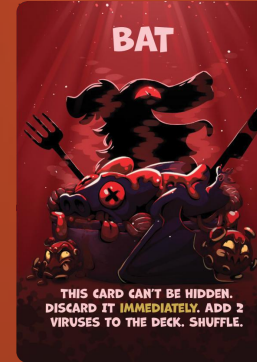
THIS CARD CAN'T BE HIDDEN.  
DISCARD IT IMMEDIATELY. ADD 2  
VIRUSES TO THE DECK. SHUFFLE.

1 IN DECK



5 IN DECK  
2 ACTIVATED

## 4 PLAYERS



THIS CARD CAN'T BE HIDDEN.  
DISCARD IT IMMEDIATELY. ADD 2  
VIRUSES TO THE DECK. SHUFFLE.

2 IN DECK



3 IN DECK  
4 ACTIVATED

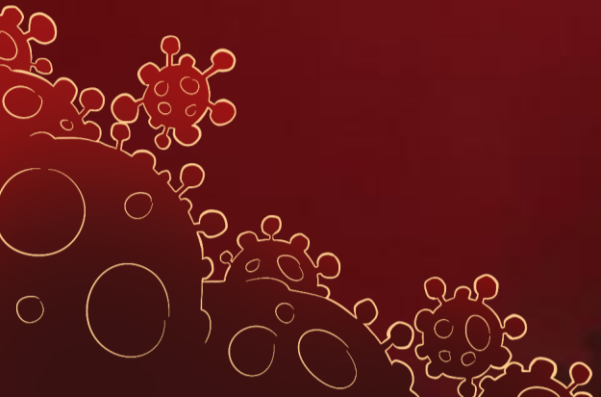
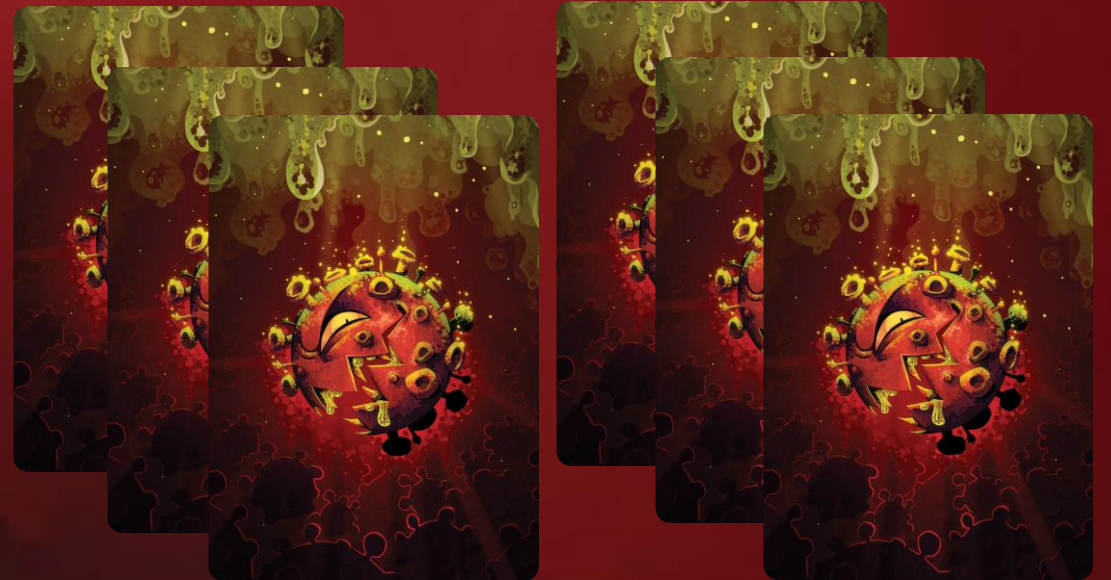


# HAND LIMIT

PLAYERS HAVE A HAND LIMIT

AT THE **END OF YOUR TURN**, YOU MUST HAVE **NO MORE THAN SIX CARDS** IN YOUR HAND.

IF YOU HAVE MORE THAN SIX, YOU MUST EITHER **PLAY** OR **DISCARD** CARDS UNTIL YOU HAVE SIX OR FEWER BEFORE ENDING YOUR TURN.



## TURN ORDER

**PLAYERS TAKE TURNS CLOCKWISE**

**ON YOUR TURN:**

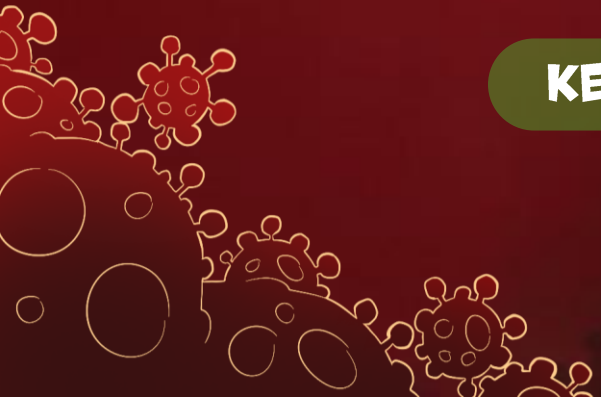
- **DRAW 1 OR 2 CARDS FROM THE DECK**
- **YOU MUST DRAW AT LEAST 1 CARD**
- **ANNOUNCE THE END OF YOUR TURN**

## PLAYING CARDS

**YOU MAY PLAY CARDS FROM YOUR HAND:**

- **AT ANY TIME DURING YOUR TURN**
- **BEFORE OR AFTER DRAWING**
- **PLAYED CARDS GO TO THE DISCARD**
- **SOME CARDS CAN BE PLAYED DURING OPPONENT'S TURN**

**KEEP YOUR CARDS HIDDEN UNLESS INSTRUCTED OTHERWISE**



# VIRUSES

**WHEN YOU DRAW A VIRUS:**

**KEEP IT HIDDEN IN YOUR HAND**

**OR**

**REVEAL IT AND PLACE IT IN FRONT OF YOU**

**PLAYERS MAY FORCE OTHERS TO REVEAL VIRUS CARDS**

**YOU CAN CONTINUE PLAYING WITH 1 REVEALED VIRUS**

**HAVE 2 REVEALED VIRUS CARDS? YOU'RE OUT**



## AVOIDING A VIRUS

- **LOOK AT THE TOP 2 CARDS OF THE DECK**
- **TAKE ANY NUMBER OF THEM (OR NONE OF THEM)**
- **RETURN THE REST TO THE TOP OF THE DECK IN ANY ORDER**
- **END YOUR TURN**



## BLOCKING A VIRUS

WHEN YOU DRAW A VIRUS FROM THE DECK DO NOT ADD IT TO YOUR HAND

- PLAY SANITIZER
- RETURN THE VIRUS TO THE TOP OF THE DECK WITHOUT REVEALING IT

THIS DOES NOT AFFECT ALREADY REVEALED VIRUSES OR VIRUSES FROM OTHER SOURCES



## EXPOSING OPPONENTS

**FORCE A PLAYER TO DRAW 2 CARDS ONE AT A TIME FACE UP**

**IF A **VIRUS** IS DRAWN THIS WAY:**

- **IT BECOMES REVEALED AND PLACED FACE UP IN FRONT OF THE PLAYER**
- **IT CANNOT BE PREVENTED**

**CARDS WITH AN "**IMMEDIATE**" KEYWORD APPLY THEIR EFFECTS INSTANTLY**

**OTHER CARDS GO TO THE PLAYER'S HAND**



# INFECTED ACTION

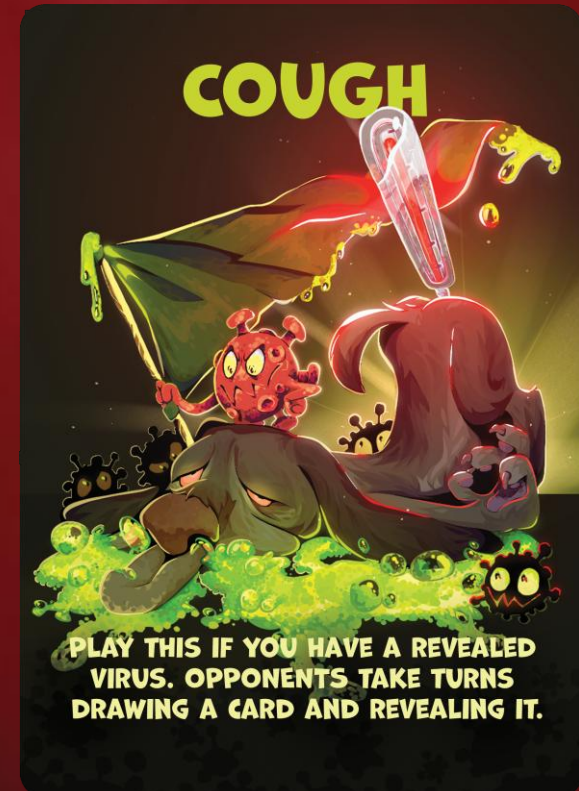
**ONLY A PLAYER WITH A REVEALED VIRUS CAN PLAY THIS CARD!**

**STARTING WITH THE PLAYER TO YOUR RIGHT, EACH OPPONENT:**

- **DRAWS 1 CARD**
- **REVEALS IT**

**VIRUSES REMAIN REVEALED AND STAY ON THE TABLE FACE UP IN FRONT OF YOU**

**OTHER CARDS GO TO EACH PLAYER'S HAND**



# CHECKING A VIRUS

- LOOK AT THE TOP 3 CARDS
- TAKE EXACTLY 1
- RETURN THE REST TO THE TOP OF THE DECK IN ANY ORDER
- END YOUR TURN



# SKIP YOUR TURN

PLAY THIS CARD TO END YOUR TURN  
WITHOUT DRAWING



# SHUFFLE YOUR HAND

PLAY THIS CARD. SHUFFLE THE REST OF YOUR HAND INTO THE DECK, THEN DRAW THE SAME NUMBER OF CARDS ONE BY ONE

CARDS WITH AN "IMMEDIATE" KEYWORD APPLY THEIR EFFECTS INSTANTLY

REVEALED VIRUS CARDS CAN'T BE SHUFFLED



# REDIRECT

PLAY WHEN ANOTHER PLAYER TARGETS YOU WITH  
A "CHOOSE A PLAYER" KEYWORD

THEY RESOLVE THAT EFFECT THEMSELVES INSTEAD



# QUARANTINE

**ALL PLAYERS REVEAL THEIR HANDS**

**THIS CANNOT BE PREVENTED**

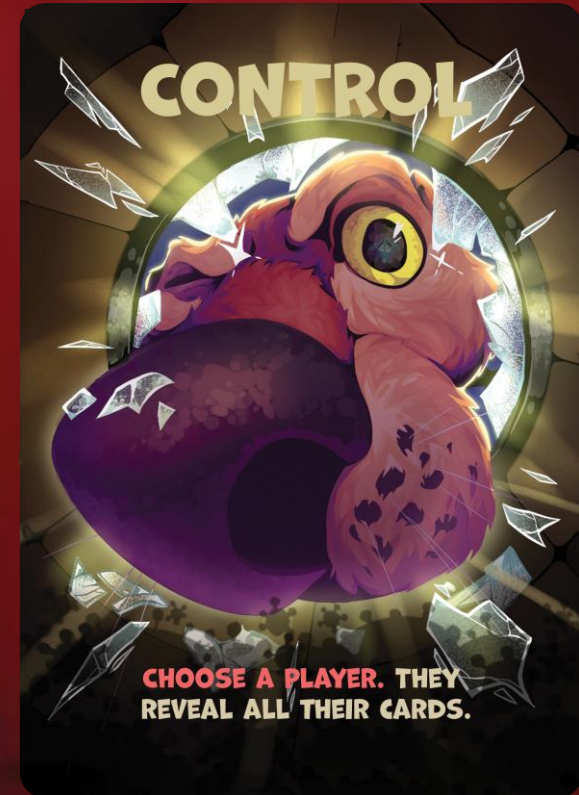
**ALL VIRUSES IN THE HAND BECOME REVEALED  
AND STAY ON THE TABLE FACE UP IN FRONT  
OF THE PLAYER**



# CHECK AN OPPONENT

- CHOOSE A PLAYER
- THEY REVEAL THEIR HAND

**ALL VIRUSES IN THE HAND BECOME REVEALED  
AND STAY ON THE TABLE FACE UP IN FRONT  
OF THE PLAYER**



## SURPRIZE CARD

WHEN DRAWN:

- DISCARD IT **IMMEDIATELY**
- REVEAL YOUR HAND

**ALL VIRUSES IN THE HAND BECOME REVEALED  
AND STAY ON THE TABLE FACE UP IN FRONT  
OF THE PLAYER**



# INCREASING TENSION

## WHEN DRAWN:

- DISCARD IT **IMMEDIATELY**
- **ADD 2 VIRUSES** TO THE DECK AND SHUFFLE



# ELIMINATED PLAYERS

WHEN A PLAYER IS ELIMINATED:

- **SHUFFLE THEIR VIRUSES INTO THE DECK**
- **ALL OTHER CARDS ARE PLACED IN THE DISCARD**



# HARD QUARANTINE

**IF THE DECK RUNS OUT AND MULTIPLE PLAYERS REMAIN,  
PLAYERS TAKE TURNS:**

- **STARTING FROM THE PLAYER WHO COULDN'T TAKE CARD FROM THE DECK**
- **DRAW 1 CARD FROM ANOTHER PLAYER'S HAND**
- **REVEAL IT**

**IF IT IS A VIRUS:**

- **IT BECOMES AN REVEALED VIRUS IN FRONT OF THE PLAYER IT WAS TAKEN FROM**
- **OTHERWISE, DISCARD IT**